



# Certificate of Analysis

Powered by Confident Cannabis

Rare Cannabinoid Company

Sample: 2203DBL0086.1529

METRC Sample:  
Batch #: 4440

Lic. #CBD

Strain: Rare Cannabinoid Company - CBD Gummy  
Ordered: 03/08/2022; Sampled: 03/22/2022; Completed: 03/31/2022

## Rare Cannabinoid Company - CBD Gummy

Ingestible, Soft Chew, Other



Pesticides



Microbials



Mycotoxins



Heavy Metals



Foreign Matter



Solvents

### Terpenes

Analyzed by 300.13 GC/FID and GC/MS

Compound	LOQ mg/unit	Mass mg/unit	Mass mg/g
<LOQ Total Terpenes			
α-Bisabolol	0.601	<LOQ	<LOQ
α-Humulene	0.601	<LOQ	<LOQ
α-Pinene	0.601	<LOQ	<LOQ
α-Terpinene	0.601	<LOQ	<LOQ
β-Caryophyllene	0.601	<LOQ	<LOQ
β-Myrcene	0.601	<LOQ	<LOQ
β-Pinene	0.601	<LOQ	<LOQ
Camphene	0.601	<LOQ	<LOQ
Caryophyllene Oxide	0.601	<LOQ	<LOQ
cis-Nerolidol	0.391	<LOQ	<LOQ
cis-Ocimene	0.391	<LOQ	<LOQ
δ-3-Carene	0.601	<LOQ	<LOQ
δ-Limonene	0.601	<LOQ	<LOQ
Eucalyptol	0.601	<LOQ	<LOQ
γ-Terpinene	0.601	<LOQ	<LOQ
Geraniol	0.601	<LOQ	<LOQ
Guaiol	0.601	<LOQ	<LOQ
Isopulegol	0.601	<LOQ	<LOQ
Linalool	0.601	<LOQ	<LOQ
p-Cymene	0.601	<LOQ	<LOQ
Terpinolene	0.601	<LOQ	<LOQ
trans-Nerolidol	0.210	<LOQ	<LOQ
trans-Ocimene	0.210	<LOQ	<LOQ

### Cannabinoid Relative Concentration

Analyzed by 300.18 UHPLC/PDA

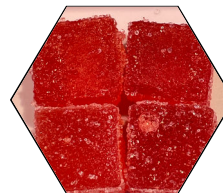
Compound	LOQ mg/unit	Mass mg/unit	Mass mg/g	Relative Concentration
<LOQ Δ9-THC + Δ8-THC				
28.447 mg/unit CBD				
28.447 mg/unit Total Cannabinoids				
CBC	0.088	<LOQ	<LOQ	
CBCa	0.088	<LOQ	<LOQ	
CBD	0.088	28.447	7.112	
CBDa	0.088	<LOQ	<LOQ	
CBDV	0.088	<LOQ	<LOQ	
CBDVa	0.088	<LOQ	<LOQ	
CBG	0.088	<LOQ	<LOQ	
CBGa	0.088	<LOQ	<LOQ	
CBL	0.088	<LOQ	<LOQ	
CBN	0.088	<LOQ	<LOQ	
Δ8-THC	0.088	<LOQ	<LOQ	
Δ9-THC	0.088	<LOQ	<LOQ	
THCa	0.088	<LOQ	<LOQ	
THCV	0.088	<LOQ	<LOQ	
THCVa	0.088	<LOQ	<LOQ	

1 Unit = Rare Cannabinoid Company - CBD Gummy, 4g  
Total THC = 0.877 x THC-A + Δ9-THC + Δ8-THC; Total CBD = CBDa \* 0.877 + CBD

Pass

pH: NT  
Aw: 0.38

Not Tested  
Homogeneity



*Benjamin G.M. Chew, Ph.D.*  
Benjamin G.M. Chew, Ph.D.  
Laboratory Director

*Kelly Zaugg*  
Kelly Zaugg  
Quality Control



4439 Polaris Ave  
Las Vegas, NV  
(702) 728-5180

www.dblabslv.com

This report is considered highly confidential and the sole property of the customer. DB Labs will not discuss any part of this study with personnel other than those authorized by the client. The results described in this report only apply to the samples analyzed. The reported result is based on a sample weight with the applicable moisture content for that sample. LOQ = Limit of Quantitation, Pesticide LOQ = Instrument Limit of Quantitation, NA = Not Analyzed, ND = Not Detected, NR = Not Reported, NT = Not Tested. PGR = Plant Growth Regulator. Unless otherwise stated all quality control samples performed within specifications established by the Laboratory. This product has been tested by DB Labs, LLC (MME# 61887736101164525768) using valid testing methodologies and a quality system as required by Nevada state law. Edibles are picked up prior to final packaging unless otherwise stated. Values reported relate only to the product tested. The uncertainty of measurement associated with the measurement result reported in this certificate is available from the organization upon request. DB Labs makes no claims as to the efficacy, safety or other risks associated with any detected or non-detected levels of any compounds reported herein. This Certificate shall not be reproduced except in full, without the written approval of DB Labs.



# Certificate of Analysis

Powered by Confident Cannabis

Rare Cannabinoid Company

Sample: 2203DBL0086.1529

METRC Sample:  
Batch #: 4440

Lic. #CBD

Strain: Rare Cannabinoid Company - CBD Gummy  
Ordered: 03/08/2022; Sampled: 03/22/2022; Completed: 03/31/2022

## Rare Cannabinoid Company - CBD Gummy

Ingestible, Soft Chew, Other



### Pesticides

Analyzed by 300.9 LC/MS/MS and GC/MS/MS

Pass

Compound	LOQ	Limit	Mass	Status
	PPB	PPB	PPB	
Abamectin	10	0	<LOQ	Pass
Acequinocyl	10	4000	<LOQ	Pass
Bifenazate	10	400	<LOQ	Pass
Bifenthrin	10	0	<LOQ	Pass
Cyfluthrin	10	2000	<LOQ	Pass
Cypermethrin	10	0	<LOQ	Pass
Daminozide	10	0	<LOQ	Pass
Dimethomorph	10	2000	<LOQ	Pass
Etoxazole	10	400	<LOQ	Pass
Fenhexamid	10	1000	<LOQ	Pass
Flonicamid	10	1000	<LOQ	Pass
Fludioxonil	10	500	<LOQ	Pass
Imidacloprid	10	500	<LOQ	Pass
Myclobutanil	10	400	<LOQ	Pass
Pacllobutrazol	10	0	<LOQ	Pass
Piperonyl Butoxide	10	3000	<LOQ	Pass
Pyrethrins	10	2000	<LOQ	Pass
Quintozene	10	800	<LOQ	Pass
Spinetoram	10	1000	<LOQ	Pass
Spinosad	10	1000	<LOQ	Pass
Spirotetramat	10	1000	<LOQ	Pass
Thiamethoxam	10	400	<LOQ	Pass
Trifloxystrobin	10	1000	<LOQ	Pass
Plant Growth Regulators	10	50	<LOQ	Pass

### Microbials

Analyzed by 300.1 Plating/QPCR

Pass

Quantitative Analysis	LOQ	Limit	Mass	Status
	CFU/g	CFU/g	CFU/g	
Aerobic Bacteria	800	100000	<LOQ	Pass
Bile-Tolerant Gram-Negative Bacteria	80	1000	<LOQ	Pass

Qualitative Analysis	Detected or Not Detected	Status
E. Coli	Not Detected	Pass
Salmonella	Not Detected	Pass

### Mycotoxins

Analyzed by 300.2 Elisa

Not Tested

Mycotoxin	LOQ	Limit	Mass	Status
-----------	-----	-------	------	--------

### Heavy Metals

Analyzed by 300.8 ICP/MS

Pass

Element	LOQ	Limit	Mass	Status
	PPB	PPB	PPB	
Arsenic	45	2000	<LOQ	Pass
Cadmium	45	820	<LOQ	Pass
Lead	45	1200	<LOQ	Pass
Mercury	45	400	<LOQ	Pass

### Residual Solvents

Analyzed by 300.13 GC/FID and GC/MS

Pass

Compound	LOQ	Limit	Mass	Status
	PPM	PPM	PPM	
Butanes	96	500	<LOQ	Pass
Ethanol	96		<LOQ	Tested
Heptanes	96	500	<LOQ	Pass
Propane	96	500	<LOQ	Pass



*Benjamin G.M. Chew*  
Benjamin G.M. Chew, Ph.D.  
Laboratory Director

*Kelly Zaugg*  
Kelly Zaugg  
Quality Control



4439 Polaris Ave  
Las Vegas, NV  
(702) 728-5180  
www.dblabslv.com

This report is considered highly confidential and the sole property of the customer. DB Labs will not discuss any part of this study with personnel other than those authorized by the client. The results described in this report only apply to the samples analyzed. The reported result is based on a sample weight with the applicable moisture content for that sample. LOQ = Limit of Quantitation. Pesticide LOQ = Instrument Limit of Quantitation, NA = Not Analyzed, ND = Not Detected, NR = Not Reported, NT = Not Tested. PGR = Plant Growth Regulator. Unless otherwise stated all quality control samples performed within specifications established by the Laboratory. This product has been tested by DB Labs, LLC (MME# 61887736101164525768) using valid testing methodologies and a quality system as required by Nevada state law. Edibles are picked up prior to final packaging unless otherwise stated. Values reported relate only to the product tested. The uncertainty of measurement associated with the measurement result reported in this certificate is available from the organization upon request. DB Labs makes no claims as to the efficacy, safety or other risks associated with any detected or non-detected levels of any compounds reported herein. This Certificate shall not be reproduced except in full, without the written approval of DB Labs.